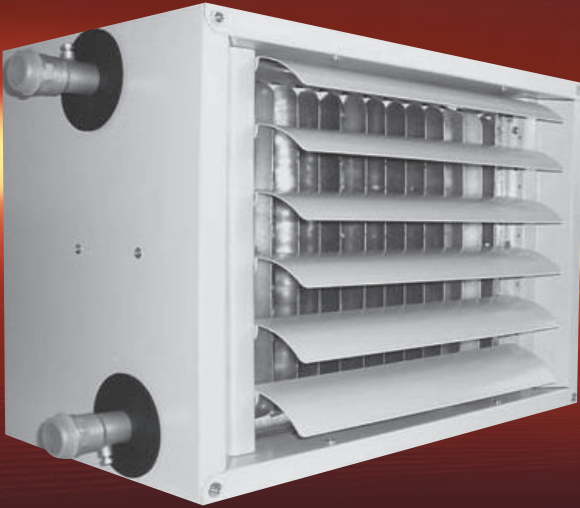


Kroll air heaters: custom-made heat



These units are of compact construction and can easily be mounted anywhere. They operate via the pipe system of your central heating. The large range offers heaters from 10 – 203 kW of heat output. The integrated heat exchanger is made from copper/aluminium for

warm water as a heating medium. The units have protection class IP54. The multi-stage adjustable fans are perfect for the multitude of different needs on site. They assure draught-free, area-wide and comfortable heat and air distribution.

In order to calculate your requirements exactly, the Kroll consultant team is at your disposal.

Please ask for more information!

Model type	CU/ALU PWW	LH 120	LH 130	LH 220	LH 230	LH 320	LH 330	LH 420	LH 430	LH 520	LH 530
Stage 3											
Air volume	m ³ /h	1.750	1.550	2.450	2.300	3.600	3.400	3.950	3.900	5.200	4.900
Heating power at LTHW 90/70° C, EAT = +20°C	kW	12,50	16,30	16,60	22,40	25,80	34,30	29,90	40,20	36,60	49,40
	LTHW 90/70° C, EAT = -15°C	kW	23,98	30,02	32,62	42,54	49,17	64,24	56,01	74,71	70,26
Stage 3											
Air volume	m ³ /h	1.250	1.150	2.050	1.850	2.350	2.000	2.800	2.650	3.300	3.150
Heating power at LTHW 90/70° C, EAT = +20°C	kW	10,90	14,10	15,60	20,30	21,70	26,50	26,10	33,40	30,60	39,80
	LTHW 90/70° C, EAT = -15°C	kW	19,51	24,58	29,14	36,90	37,71	44,91	45,24	57,63	53,11
Stage 1											
Air volume	m ³ /h	900	850	1.900	1.550	1.650	1.350	1.900	1.850	2.450	2.200
Heating power at LTHW 90/70° C, EAT = +20°C	kW	9,60	4,70	15,20	18,70	18,60	21,30	22,00	10,50	26,70	32,90
	LTHW 90/70° C, EAT = -15°C	kW	15,80	19,90	27,82	32,17	30,05	33,84	35,12	44,70	43,78
Motor 230V~50Hz max. power	kW	0,08	0,08	0,095	0,095	0,14	0,14	0,18	0,18	0,15	0,15

Model type	CU/ALU PWW	LH 620	LH 630	LH 720	LH 730	LH 920	LH 930	
Stage 2								
Air volume	m ³ /h	6.700	6.700	8.500	7.700	12.550	10.900	
Heating power at	LTHW 90/70° C, EAT = +20°C	kW	44,50	59,20	63,40	82,60	83,40	108,30
	LTHW 90/70° C, EAT = -15°C	kW	87,24	113,02	119,21	150,98	163,26	203,45
Stage 1								
Air volume	m ³ /h	4.550	4.250	6.550	6.100	8.950	8.400	
Heating power at	LTHW 90/70° C, EAT = +20°C	kW	38,50	49,70	57,70	73,70	73,40	96,10
	LTHW 90/70° C, EAT = -15°C	kW	69,05	88,17	101,55	129,12	133,23	171,42
Motor 400V~50Hz maximale Leistung	kW	0,245	0,245	0,26	0,26	0,49	0,49	

Your advantages at a glance



■ Large power range

A wide range of models with a multi-stage fan permits an optimal solution to your requirements. On request, we can also supply units that use steam as heating medium or versions with explosion proof motors.

■ Suitable for every application

They can easily be changed from wall-mounting to ceiling-mounting, which makes them extremely versatile.

■ Low noise level

No noise pollution due to quiet operation.

■ Elegant design

Besides the powdered version LH (RAL 7035), all models are also available in a stainless steel version LH-X.

■ Wide range of accessories

With the right accessories, a comfortable room climate becomes the most natural thing.

Model type	Soundpressure level db(A)*		
	Stage		
	3rd	2nd	1st
LH 130	50	47	41
LH 220	51	47	45
LH 230	51	47	45
LH 320	52	40	43
LH 330	52	40	43
LH 420	53	49	43
LH 430	53	49	43

Model type	Soundpressure level db(A)*		
	Stage		
	3rd	2nd	1st
LH 530	53	49	43
LH 620	53	49	47
LH 630	53	49	47
LH 720	52	–	46
LH 730	52	–	46
LH 920	53	–	48
LH 930	53	–	48

Model type	LH	120 / 130	220 / 230	320 / 330	420 / 430	520 / 530	620 / 630	720 / 730	920 / 930
A	mm	550	600	650	700	750	800	850	1400
B	mm	400	450	500	550	600	650	700	700
C	mm	331	331	331	331	331	331	331	331
D	mm	95	115	130	110	120	150	170	170
P	mm	489	539	589	639	689	739	789	1139
Weight	kg	17 18	19 21	22 25	26 27	30 32	32 36	41 44	71 76

* measured in free space at a distance of 5 m.