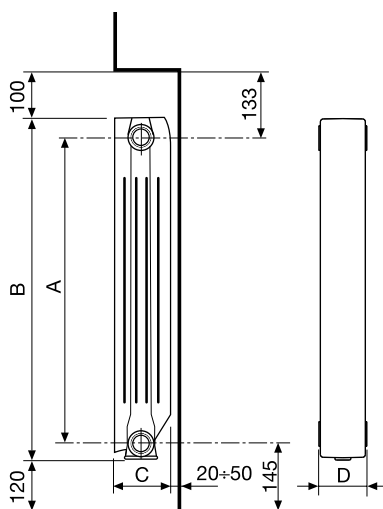


BLITZ SUPER B4

- ▶ 100% MADE IN ITALY
- ▶ The closed front section gives a classic and elegant style to the radiator;
- ▶ Ideal for low-temperature heating systems;
- ▶ Excellent weight/power ratio, which facilitates transport, handling and installation;
- ▶ Unalterable over time thanks to its double coating: anaphoresis + powder coating
- ▶ High technological content: 3 international patents
- ▶ Openings at the rear of the radiator to increase convective heat exchange
- ▶ Modular: perfect for any space
- ▶ Maximum working pressure: 16 bar
- ▶ Pressure test (undergone by 100% of manufactured products): 24 bar
- ▶ Bursting pressure: 60 bar
- ▶ Greater heat exchange, low thermal inertia = outstanding performances, low power consumption.
- ▶ 10-years warranty.



STANDARD SUPPLY: Available from 3 to 10 sections for centre distance 800 – from 3 to 12 sections for centre distance 700 - from 3 to 14 sections for centre distance 350-500-600.

COLOUR: Ral 9010 White



Fondital guarantees **BLITZ SUPER B4** for 10 years from the date of installation against all production defects providing the heating system is conform to the regulations, in compliance with the standards in force and provided the instructions on installation, use and correct maintenance supplied with the product have been observed.



| Model | Code | Depth | Height | Centre distance | Length | Connection diameters | Water capacity | Heat output ΔT 50 K | Heat output ΔT 30 K | Exponent | Coeff. |
|---------|---------|--------|--------|-----------------|--------|----------------------|----------------|-----------------------------|-----------------------------|----------|--------|
| | | (C) mm | (B) mm | (A) mm | (D) mm | inches | litres/sect. | W/el. | W/el. | n | K_m |
| 350/100 | V693014 | 97 | 407 | 350 | 80 | G1 | 0,24 | 92,4 | 48,0 | 1,2818 | 0,6139 |
| 500/100 | V693034 | 97 | 557 | 500 | 80 | G1 | 0,27 | 124,0 | 63,7 | 1,3027 | 0,7587 |
| 600/100 | V693044 | 97 | 657 | 600 | 80 | G1 | 0,29 | 143,5 | 73,8 | 1,3015 | 0,8822 |
| 700/100 | V693054 | 97 | 757 | 700 | 80 | G1 | 0,35 | 162,5 | 82,6 | 1,3238 | 0,9155 |
| 800/100 | V693064 | 97 | 857 | 800 | 80 | G1 | 0,38 | 178,2 | 90,3 | 1,3301 | 0,9896 |

Maximum working pressure: 1600 kPa (16 bar)

Characteristic equation of the model $\Phi = K_m \Delta T^n$.

The thermal efficiency values shown comply with the European Standard EN 442-1:2014 and are certified by the MRT Lab of the Milan Polytechnic, notified body no. 1695.

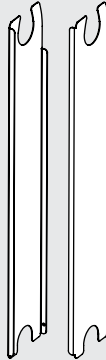



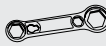

ACCESSORIES

(to be ordered separately)



► SUPER B4

| | Article | Code | Description |
|---|---------|-----------|--|
|  | A 1/1 | 520201 RH | 1"G automatic air-purging valve, chromed (always to be installed with the vent in upward position) |
| | | 520202 LH | |
|  | A 2/1 | 510011 | 1"G joining nipple |
|  | A 4/1 | 525014 RH | 1"G zinc-plated, paint-coated plug |
| | | 525114 LH | |
|  | A 6/1 | 526014 RH | Reducer 3/8 white |
| | | 526214 RH | Reducer 1/2 white |
| | | 526414 RH | Reducer 3/4 white |
| | | 526114 LH | Reducer 3/8 white |
| | | 526314 LH | Reducer 1/2 white |
| | | 526514 LH | Reducer 3/4 white |
|  | A 8/1 | 525214 RH | Valve plug 1/4 white |
| | | 525414 RH | Valve plug 1/8 white |
| | | 525314 LH | Valve plug 1/4 white |
| | | 525514 LH | Valve plug 1/8 white |
|  | A 10/1 | 530105 | Nipple gasket (asbestos-free) |
|  | A 11/1 | 530108 | Gasket for plugs (asbestos-free) |
|  | A 13 | 540024 | Touch-up spray paint (white RAL 9010) cc 400 |
|  | A 16 | 550020 | Bracket to be embedded in the wall mm 175 |
|  | A 18 | 550035 RH | Bracket to be screwed on to the wall |
| | | 550036 LH | |

| | Article | Code | Description |
|---|---------|---------|--|
|  | - | 550360 | Side covers kit, 350 mm |
| | - | 550361 | Side covers kit, 500 mm |
| | - | 550362 | Side covers kit, 600 mm |
| | - | 550363 | Side covers kit, 700 mm |
| | - | 550364 | Side covers kit, 800 mm |
|  | | 5200521 | Installation kit with two brackets, centre distance 350 mm |
| | | 5200522 | Installation kit with two brackets, centre distance 500 mm |
| | | 5200523 | Installation kit with two brackets, centre distance 600 mm |
| | | 5200524 | Installation kit with two brackets, centre distance 700 mm |
| | | 5200525 | Installation kit with two brackets, centre distance 800 mm |
|  | A 20 | 550037 | Installation kit with two adjustable, coated brackets |
|  | A 26/1 | 550090 | Nipple wrench 1"G |
|  | A 40/2 | 560257 | Plastic key |
|  | A 80 | 550103 | Mounting kit for radiators each containing: - 2 zinc-plated, paint-coated reducers 1/2"G, Rh - 2 zinc-plated, paint-coated reducers 1/2"G, Lh - 4 retaining gaskets - 1 manual air-purging valve 1/2"G with gasket - 1 (1/2"G) plug with gasket |
| | | | A 81 |