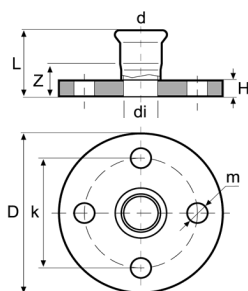


**Übergangsflansch
PN 6 und PN 10/16**



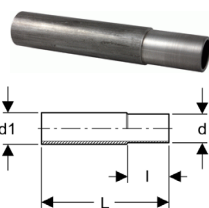
Art. Nr.	d	D	di	L	H	m	k	Z	Gewicht in g	VPE / Beutel	Mind. Menge
PN 10/16											
C52AE-LBP	22	105	21	63	16	14	75	40	676	*	20
C52AF-LBP	28	115	27	67	16	14	85	43	1.224	*	20
C52AG-LBP	35	140	32	72	18	18	100	45	2.048	*	20
C52AH-LBP	42	150	41,8	80	18	18	110	48	2.394	*	20
C52AJ-LBP	54	165	54	96	18	18	125	59	2.844	*	20
C52AK	76,1	185	72	134	18	18	145	79	3.584	*	10
C52AL	88,9	200	85	141	20	18	160	78	4.450	*	10
C52AM	108	220	104	166	20	18	180	89	5.271	*	10

Durchmesser 88,9 und 108 (PN 10/16) mit 8 Befestigungslöcher

PN 6

C53AE-LBP	22	90	21	61	14	11	65	38	676	*	20
C53AF-LBP	28	100	27	65	14	11	75	41	828	*	10
C53AG-LBP	35	120	32	70	16	14	90	43	1.364	*	10
C53AH-LBP	42	130	39	77	16	14	100	45	1.608	*	10
C53AJ-LBP	54	140	54	96	16	14	110	59	1.790	*	10
C53AK	76,1	160	72	130	14	14	130	75	2.144	*	5
C53AL	88,9	190	85	137	16	18	150	74	3.306	*	5
C53AM	108	210	104	162	16	18	170	85	4.100	*	5

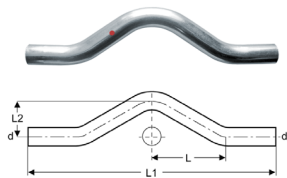
Kombirohr mit Anschweissende**



** Non galvanizzato

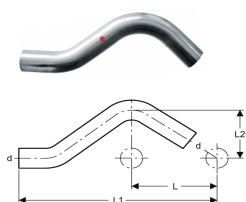
Art. Nr.	d-d1	L	I	Gewicht in g	VPE / Beutel	Mind. Menge
C13AC	15-17,2	120	30	127	*	80
C13AD	18-21,3	120	30	131	*	80
C13AE	22-26,9	120	34	217	*	50
C13AF	28-33,7	120	34	303	*	40
C13AG	35-42,4	120	40	420	*	30
C13AH	42-48,3	120	45	440	*	24
C13AJ	54-60,3	120	50	540	*	24
C13AK	76,1-76,1	120	70	570	*	10
C13AL	88,9-88,9	120	75	692	*	10
C13AM	108-114,3	120	90	842	*	10

Überbogen



Art. Nr.	d	L1	L2	L	Gewicht in g	VPE / Beutel	Mind. Menge
C76AB	12	200	35	55	86	*	30
C76AC	15	202	37	64	110	*	30
C76AD	18	237	42	66	148	*	30
C76AE	22	233	42	58	197	*	20
C76AF	28	301	50	102	312	*	20

Sprungbogen



Art. Nr.	d	L1	L2	L	Gewicht in g	VPE / Beutel	Mind. Menge
C77AB	12	154	35	55	61	*	30
C77AC	15	145	37	57	81	*	30
C77AD	18	157	40	60	107	*	30
C77AE	22	175	52	65	145	*	30
C77AF	28	226	65	74	240	*	30