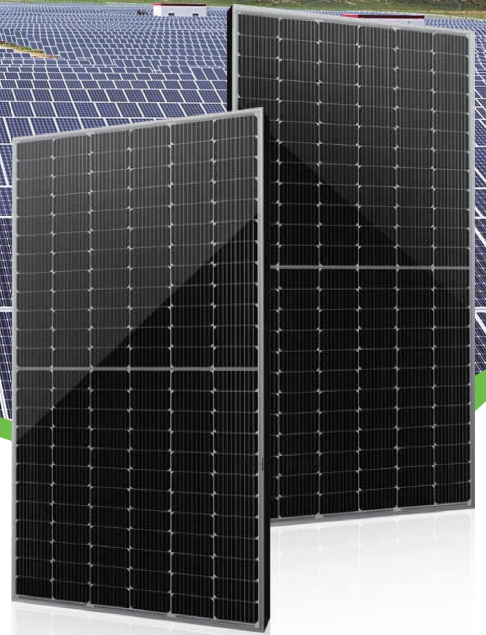




Enjoy Sunshine Enjoy Life



MONOCRYSTALLINE SOLAR MODULE

MONOCRYSTALLINE 182 HALF CELL SERIES

The solar panel characteristics



1500 Voltage

1500V system voltage design, compared with 1000V system greatly reduces BOS cost.



10BB

More uniform current collection ability, reduce the current heat loss of the battery inside the module; Beautiful appearance, more suitable for roof installation.



PID Resistant

Tested in accordance to the draft standard IEC 62804, our PV modules have demonstrated resistance against PID(Potential Induced Degradation), which translates to security for your investment.



Low light performance

Through the use of excellent glass and battery surface velvet technology to achieve low light environment excellent performance.



Load Capacity

The whole assembly has been certified with wind load of 2400Pa and snow load of 5400Pa, pass extra 8000Pa snow resistance.



Customizable

Solar panels can be customized as your requirements.

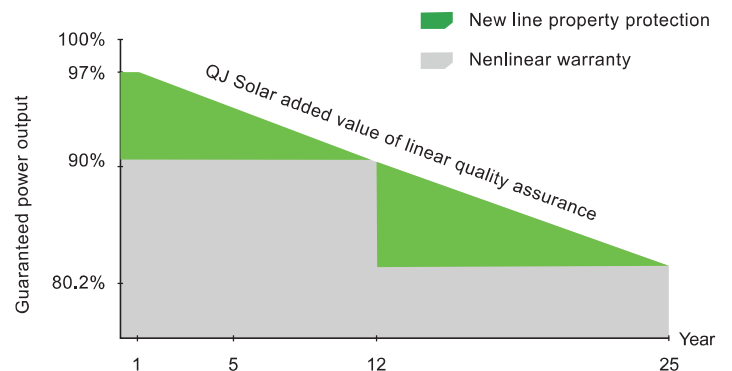
QJ Solar linear warranty



12 Years Limited Product Warranty



25 Years Performance Warranty



MONOCRYSTALLINE 182 HALF CELL SERIES



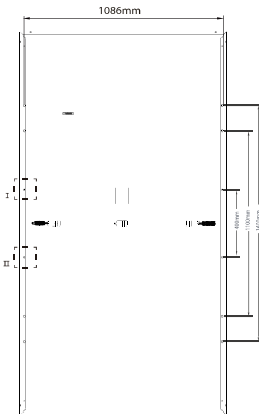
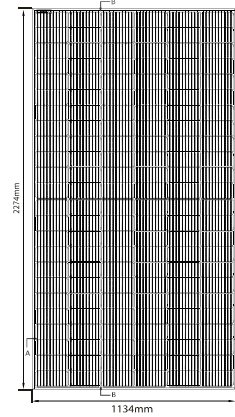
Module Diagram:

| ELECTRICAL PERFORMANCE | | | QJM525 | QJM530 | QJM535 | QJM540 | QJM545 | QJM550 |
|------------------------|------------------|-----------|---|--------|--------|--------|--------|--------|
| Module Type | | | -144H(10BB) -144H(10BB)-144H(10BB)-144H(10BB)-144H(10BB)-144H(10BB) | | | | | |
| Power output | P_{max} | Wp | 525 | 530 | 535 | 540 | 545 | 550 |
| Power output tolerance | ΔP_{max} | W | 0 + 3 | | | | | |
| Voltage at Pmax | V_{mpp} | V | 41.8 | 41.84 | 41.88 | 41.96 | 42.05 | 42.13 |
| Current at Pmax | I_{mpp} | A | 12.56 | 12.69 | 12.78 | 12.87 | 12.96 | 13.05 |
| Open-circuit voltage | V_{oc} | V | 49.3 | 49.4 | 49.5 | 49.6 | 49.7 | 49.8 |
| Short-circuit current | I_{sc} | A | 13.44 | 13.58 | 13.67 | 13.78 | 13.87 | 13.97 |
| Module Efficiency | Eff. | % | 20.4 | 20.6 | 20.8 | 21 | 21.2 | 21.4 |

| TEMPERATURE & MAXIMUM RATINGS | |
|---------------------------------|---------------|
| Temperature coefficient of Pmax | -0.39%/C |
| Temperature coefficient of Voc | -0.32%/C |
| Temperature coefficient of Isc | 0.055%/C |
| Operational Temperature | -45 C ~ +85 C |
| Maximum System Voltage | 1000/1500VDC |
| Max Series Fuse Rating | 25A |

| MECHANICAL CHARACTERISTICS | |
|--|--|
| Front cover (material / thickness) | low-iron, high transmission, tempered AR coated glass, 3.2mm |
| Backsheet (color) | white/black |
| Solar Cell (quantity / material / dimension) | 144(6*12+6*12), monocrystalline, 10BB/9BB, 182*91mm |
| Frame (material / color) | anodized aluminum alloy, silver/black |
| Junction box (protection degree) | IP 68, 3 Schottky bypass diodes |
| Cables & Plug connectors | 300mm, 4mm ² & MC4 compatible |
| Module Dimensions (L / W / H) | 2274*1134*35/2278*1133*35/2279*1134*35/2284*1134*35/2285*1134*35mm |
| Module Weight | 26kg |

| PACKING DETAILS | | |
|-----------------------|------------|--------|
| Container | 20' GP | 40' GP |
| Pieces per pallet | 31PCS+4PCS | 31PCS |
| Pallets per container | 4P | 20P |
| Pieces per container | 140PCS | 620PCS |



Electrical Curves:

