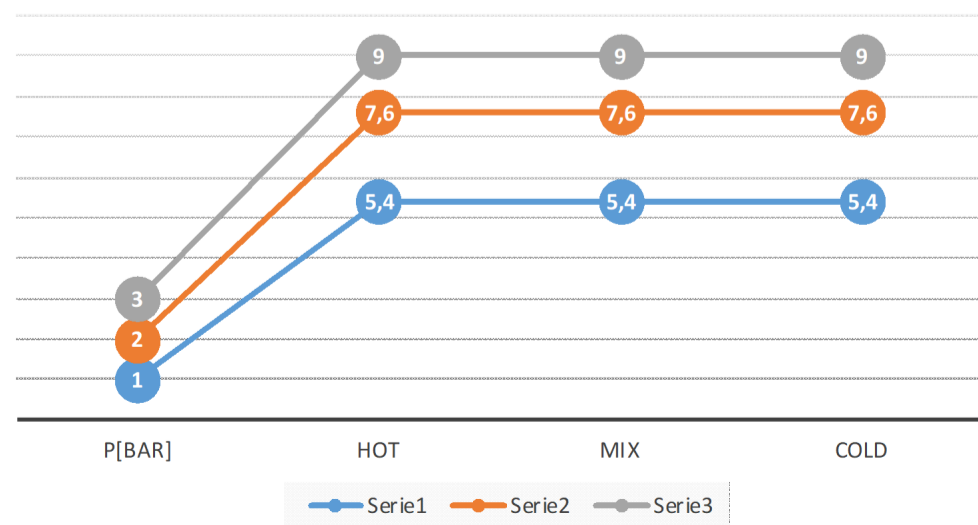


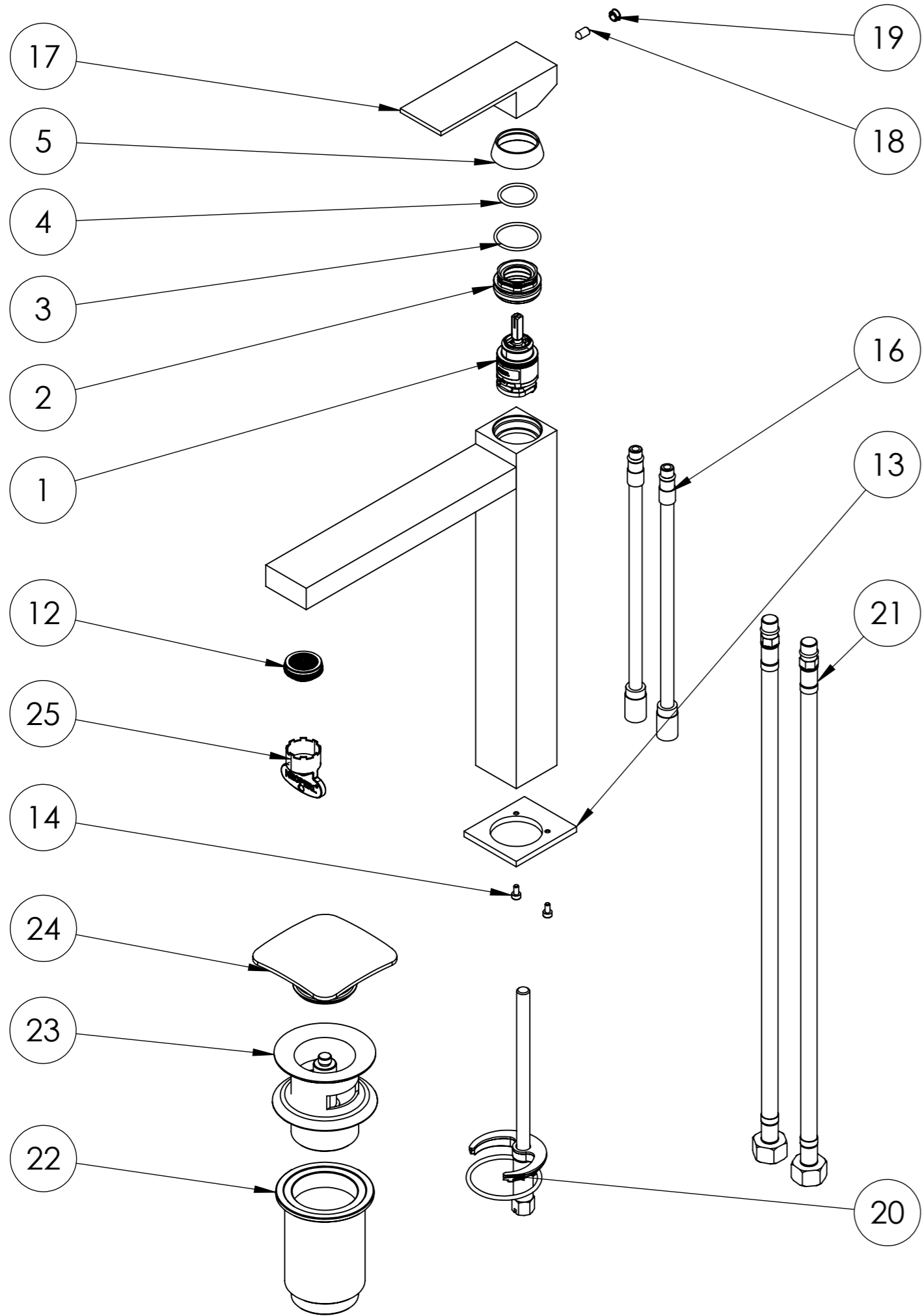
FLOW RATE [L/MIN]



Data: 04-05-2024

Cod. **93 904 73** A

Apice



Num. articolo	cod. REMER	cod. DANIEL
1	X52	A848
2	GH29	GH29
3	OR2512178	OR2512178
4	OR2035178	OR2035178
5	CAD10	CAPLDV
6	DASK607RA1	SK607RA1T
7	OR0873178	OR0873178
8	OR0925178	OR0925178
9	DASK607RA2	SK607RA2T
10	DASK607BO	CRSK607BO
11	SPIN310	SPIN310
12	83NE	A803NE
13	SK607BA	CRSK607BA
14	VT36TCCE	VTBR36
15	DASK607PRTR	SK607PRTRT
16	114PRM8	23607TUBCR
17	MASK	SK630
18	GR58	GR5X8
19	TAMASQ	23630BOCR
20	FISSE18	FISSE605
21	10838F40DVGW	A9704010DVGW
22	905CO	A735COCR
23	905PI	A735PI
24	905STA	A737TA
25	83FLC	A803KEYFLBA

Data: 02/04/2021

Cod. : 93 904 73

Apice  
A