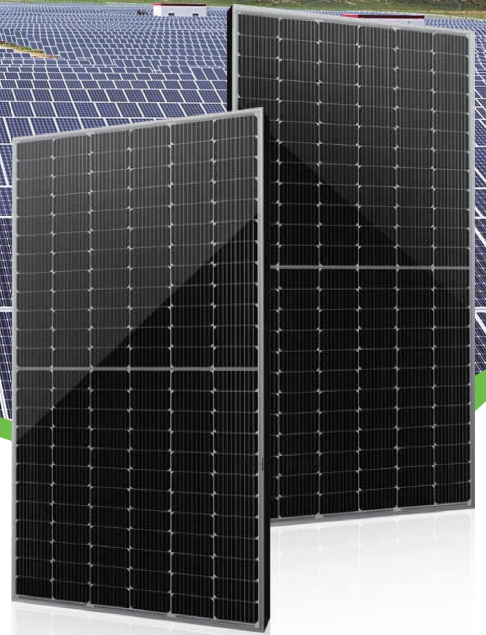




Enjoy Sunshine Enjoy Life



MONOCRYSTALLINE SOLAR MODULE

MONOCRYSTALLINE 182 HALF CELL SERIES

The solar panel characteristics



1500 Voltage

1500V system voltage design, compared with 1000V system greatly reduces BOS cost.



10BB

More uniform current collection ability, reduce the current heat loss of the battery inside the module; Beautiful appearance, more suitable for roof installation.



PID Resistant

Tested in accordance to the draft standard IEC 62804, our PV modules have demonstrated resistance against PID(Potential Induced Degradation), which translates to security for your investment.



Low light performance

Through the use of excellent glass and battery surface velvet technology to achieve low light environment excellent performance.



Load Capacity

The whole assembly has been certified with wind load of 2400Pa and snow load of 5400Pa, pass extra 8000Pa snow resistance.



Customizable

Solar panels can be customized as your requirements.

QJ Solar linear warranty



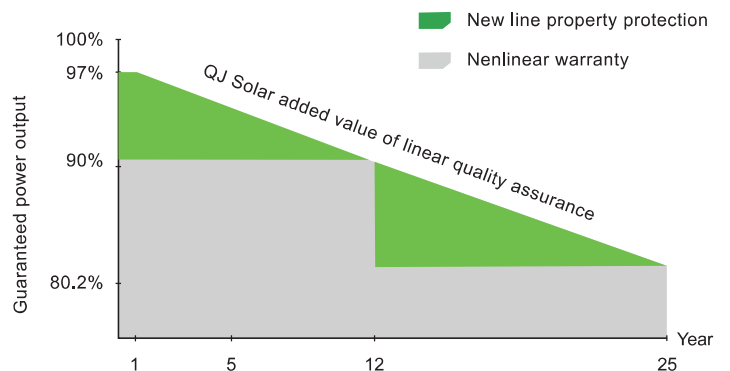
12 Years

Limited Product Warranty



25 Years

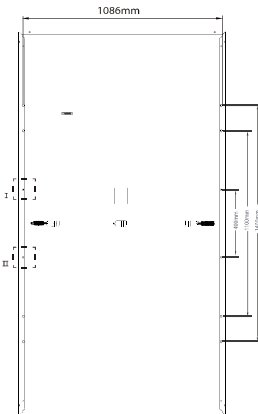
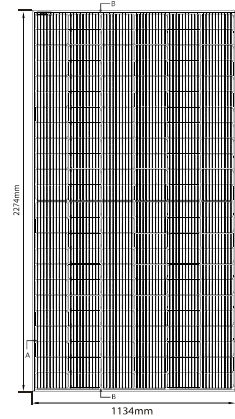
Performance Warranty



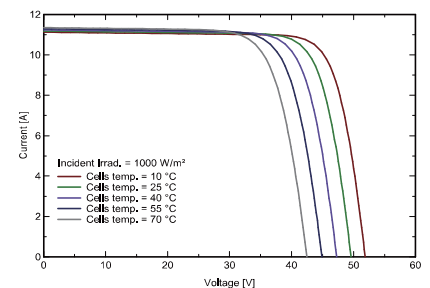
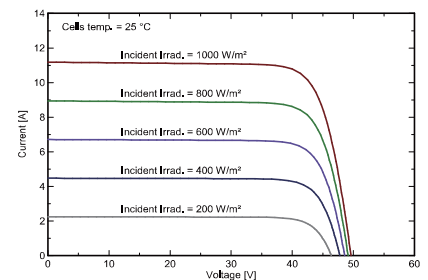
MONOCRYSTALLINE 182 HALF CELL SERIES



Module Diagram:



Electrical Curves:



ELECTRICAL PERFORMANCE

Module Type			QJM525 -144H(10BB)	QJM530 -144H(10BB)	QJM535 -144H(10BB)	QJM540 -144H(10BB)	QJM545 -144H(10BB)	QJM550 -144H(10BB)
Power output	P_{max}	Wp	525	530	535	540	545	550
Power output tolerance	ΔP_{max}	W	0 + 3					
Voltage at Pmax	V_{mpp}	V	41.8	41.84	41.88	41.96	42.05	42.13
Current at Pmax	I_{mpp}	A	12.56	12.69	12.78	12.87	12.96	13.05
Open-circuit voltage	V_{oc}	V	49.3	49.4	49.5	49.6	49.7	49.8
Short-circuit current	I_{sc}	A	13.44	13.58	13.67	13.78	13.87	13.97
Module Efficiency	Eff.	%	20.4	20.6	20.8	21	21.2	21.4

TEMPERATURE & MAXIMUM RATINGS

Temperature coefficient of Pmax	-0.39%/C
Temperature coefficient of Voc	-0.32%/C
Temperature coefficient of Isc	0.055%/C
Operational Temperature	-45°C ~ +85°C
Maximum System Voltage	1000/1500VDC
Max Series Fuse Rating	25A

MECHANICAL CHARACTERISTICS

Front cover (material / thickness)	low-iron, high transmission, tempered AR coated glass, 3.2mm
Backsheet (color)	white/black
Solar Cell (quantity / material / dimension)	144(6*12+6*12), monocrystalline, 10BB/9BB, 182*91mm
Frame (material / color)	anodized aluminum alloy, silver/black
Junction box (protection degree)	IP 68, 3 Schottky bypass diodes
Cables & Plug connectors	300mm, 4mm² & MC4 compatible
Module Dimensions (L / W / H)	2274*1134*35/2278*1133*35/2279*1134*35/2284*1134*35/2285*1134*35mm
Module Weight	26kg

PACKING DETAILS

Container	20' GP	40' GP
Pieces per pallet	31PCS+4PCS	31PCS
Pallets per container	4P	20P
Pieces per container	140PCS	620PCS

QJ SOLAR Cixi City Rixing Electronics Co., Ltd.

Addr: No. 69, Mingde Road, Zhouxiang Town, Cixi City, Ningbo City, Zhejiang Province, China
Tel: 86-574-63441748 Fax: 86-574-63456148
Email: sales@qjsolar.com Web.: www.qjsolar.com

