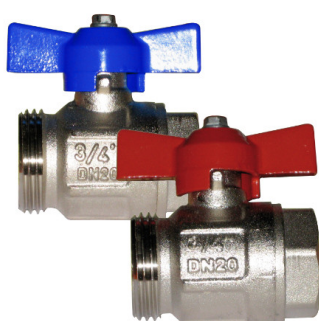


# Male-female straight ball valve

## art. AC 635Nx

Male-female straight full-flow ball valve. Red or blue butterfly-knob.



### TECHNICAL FEATURES

Temperature range:  $-20 \div +150$  °C in absence of steam

Max working pressure:

- DN 15: 50 bar
- DN 20 and DN 25: 40 bar
- DN 32: 30 bar

### MATERIALS

Body and end adapter: nickel-plated CW617N brass

Ball: chrome-plated CW617N brass

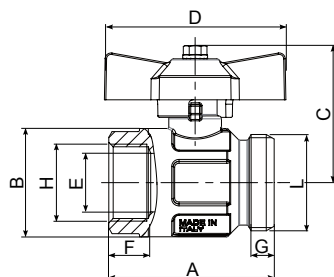
Seat: PTFE

Stem: CW614N brass

Stem sealing elements: NBR and Viton®

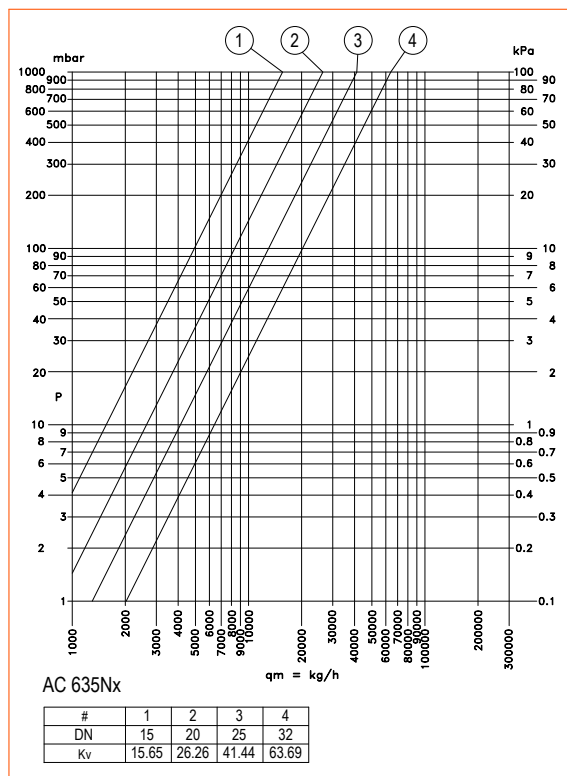
"Tee" handle: aluminium

### DIMENSIONS



ART.	COD.	DN	Colour	A	B	C	D	E	F	G	H	L
AC 635NB	501352NB	DN15	Blue	47.7	30.5	41	47	15	12.5	7	1/2"	3/4"
AC 635NB	501353NB	DN20	Blue	56.5	37	47	62	20	13.5	8	3/4"	1"
AC 635NB	501354NB	DN25	Blue	64.75	45.5	51.5	62	25	15	10.5	1"	1 1/4"
AC 635NB	501455B	DN32	Blue	76	57	64	70	32	16.5	14	1 1/4"	1 1/2"
AC 635N	501352N	DN15	Red	47.7	30.5	41	47	15	12.5	7	1/2"	3/4"
AC 635N	501353N	DN20	Red	56.5	37	47	62	20	13.5	8	3/4"	1"
AC 635N	501354N	DN25	Red	64.75	45.5	51.5	62	25	15	10.5	1"	1 1/4"
AC 635N	501455	DN32	Red	76	57	64	7	32	16.5	14	1 1/4"	1 1/2"

## ■ HYDRAULIC FEATURES



### I.V.A.R. S.p.A.

Via IV Novembre, 181  
 25080 Prevalle (BS) – ITALY  
 T. +39 030 68028 – F. +39 030 6801329  
 info@ivar-group.com – www.ivar-group.com

I.V.A.R. S.p.A. reserves the right to make enhancements and changes to products and relative documentation at any time without prior notice. All rights reserved. Reproduction, even partial, is forbidden without prior permission by the copyright owner.